



STX-CLOUD

STX-CLOUD Web Portal for Machine Control Workflow

STX-CLOUD is a web-based platform designed to seamlessly share job data between the office and the job site, ensuring smooth communication and efficient project management.

The main connection points include:

- Office – accessible from any web-enabled device
- Job Site – via any registered MC tablet device
- Cube-a (licensed) – used by the surveyor

Data uploaded from the job site to the web portal can be assigned to one or more tablet devices—typically those installed in earth-moving machines—either individually or in bulk.

A clean and intuitive interface allows users to preview DXF files before uploading them to the server. From the operator's perspective, downloading and uploading data through the cloud service is fast and user-friendly. The system also provides real-time updates on machine locations for efficient site monitoring.

Key Features of the STX-CLOUD Web Portal

- Share project data from the office to the cloud, for a single machine or a workspace (including multiple machines)
- Upload project data from the field (cube-a) to the cloud and distribute it to machines
- Preview DXF files before transfer
- Monitor machine locations directly on the map
- Store and manage machine calibration data securely in the cloud

FEATURES

STX-CLOUD Service Overview

The STX-CLOUD service allows users to upload and share files - including projects, calibration and configuration data, and localization files - between Apollo tablets, Cube-a devices, and office computers (PC/Laptop/Tablet) remotely via the cloud.

This eliminates the need for manual USB transfers to each individual device.

This modern, convenient tool helps users save time and money by reducing on-site visits, minimizing operator errors, and streamlining project deployment.

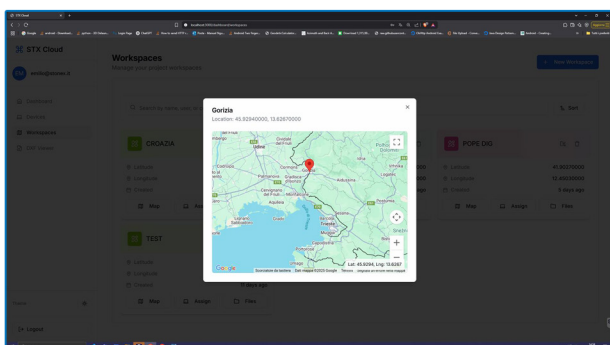
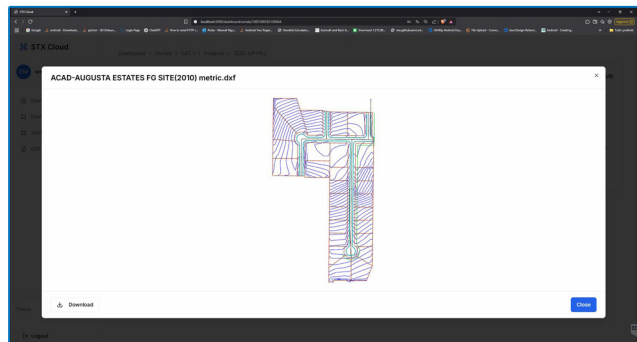
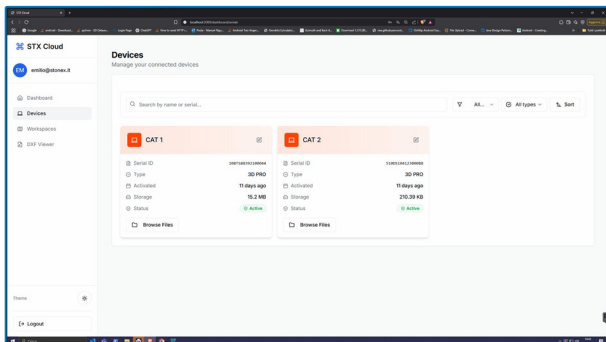
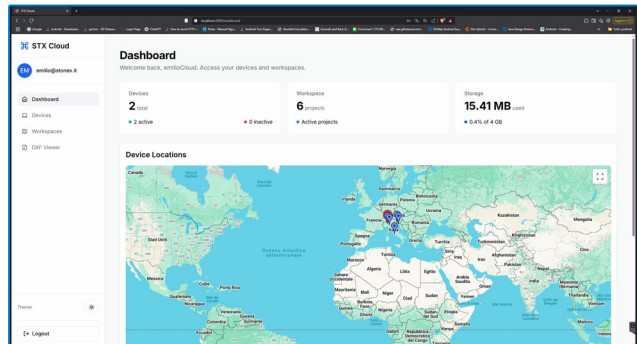
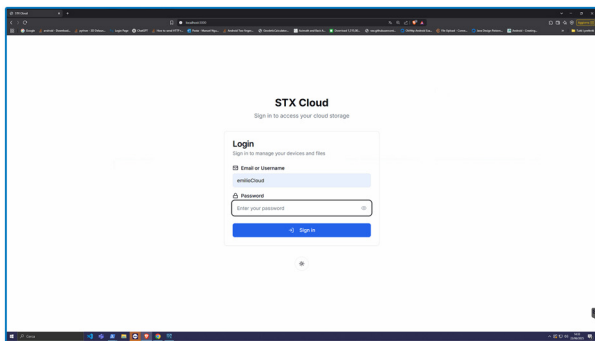
STX-CLOUD consists of two components:

Office Component (Web-UI Interface)

- Access the Web-UI from a PC, laptop, or tablet to upload, manage, and distribute projects.

Job Site Component (Apollo Display with Internet Connection)

- Apollo displays at the job site download files directly via an internet connection.
- Cube-a devices at the job site also download files directly via an internet connection.



STONEX®

Viale dell'Industria 53 - 20037 Paderno Dugnano (MI) - Italy
Phone +39 02 78619201
www.stonex.it | info@stonex.it