

## XH120 Laser Scanner

3D Handheld  
Laser Scanner



# XH120

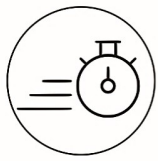
Fast &  
Efficient

XH120 is an handheld laser scanner based on newest STONEX SLAM technology.

This powerful scanner allows easy and fast capture of 3D models indoor & outdoor eliminating the need of collecting tens of scans from various stations and of complex multi-cloud registrations.

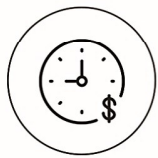
Just move around the scene with XH120 and see the point cloud growing as more data is added in real time.

Boost your productivity reducing on site capturing time and post processing workload.



## RAPID SCANNING

No more multiple scan stations, just move around the scene and collect in minutes the entire 3D point cloud.



## REDUCED WORKLOAD

No more tedious and time-consuming cloud to cloud alignment, download the full data right after the capture.



## STONEX SLAM TECHNOLOGY

Best in class sensors and real time processing: more range, more speed, more resolution, greater field of view, more reliability.



## FLEXIBILITY

Combine indoor & outdoor data, even in the most demanding environments.

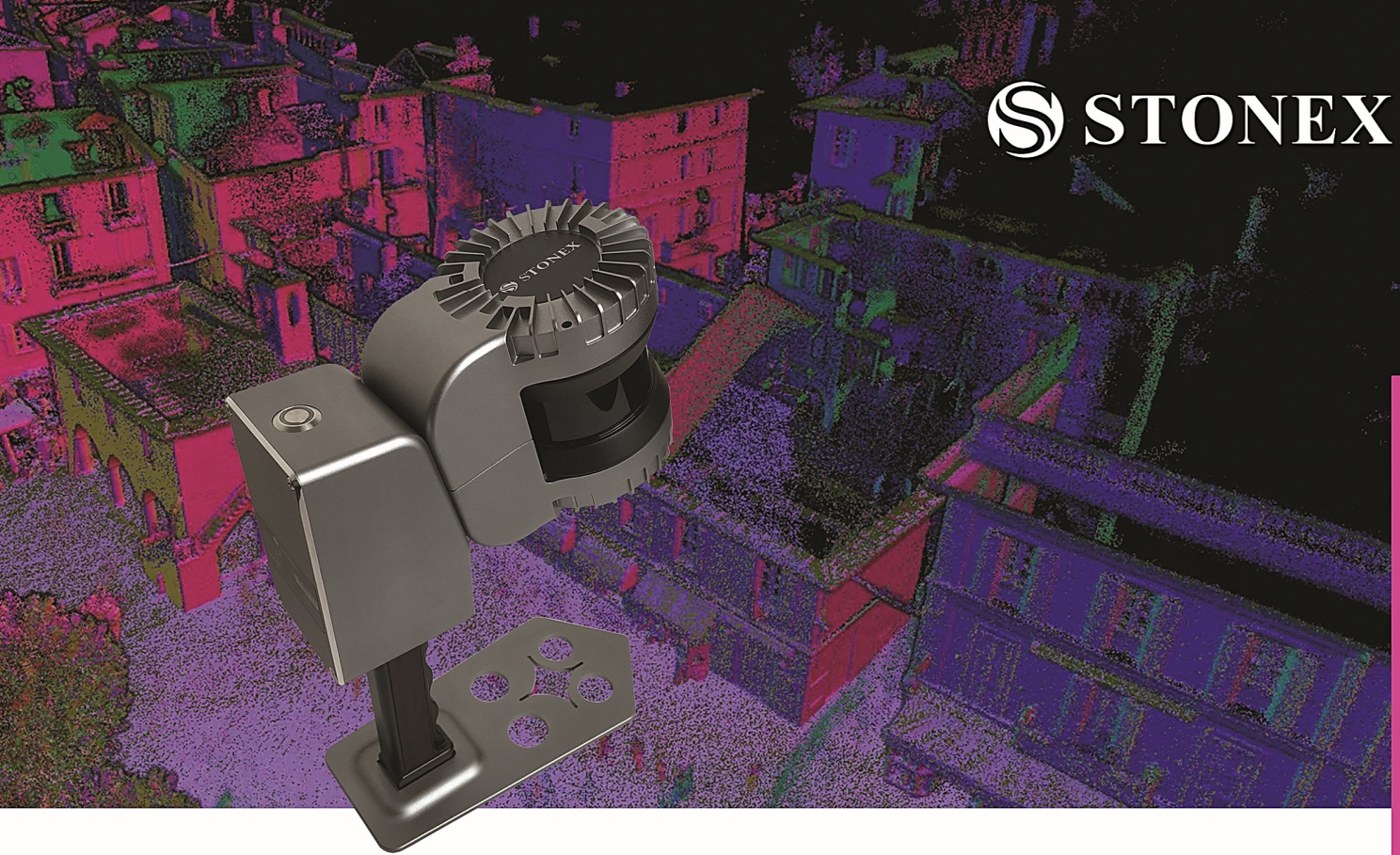


## REAL TIME

See your scanning progress in real time and control XH120 with your tablet or smartphone.







## SLAM TECHNOLOGY

### Simultaneous Localization And Mapping

STONEX SLAM technology delivers more range, more points per second and best in class on board processing algorithms to reach unmatched speed of capture and reliability even in the more demanding environments.



Offers the newest SLAM technology to deliver clear Real Time point cloud visualization and precise Post Processing optimization. User parameters adapt the algorithms to the environment and fine tune the required precision, while in conjunction with XH120 Manager additional features can be managed: control points, video tagging, photo tagging, intensity scaling, and more.

## 3D SOFTWARE

### Powerful and usable 3D Software

The Stonex Reconstructor software allows you to manage and align point clouds acquired through laser scanners or other sensors, clouds produced by photogrammetry and in general any point cloud.

Complete and clear workflows will guide you during the processing and the expandable modules are able to meet different needs, covering many fields, such as: surveying, mining, construction, architecture, cultural heritage, BIM, galleries etc.

### STONEX 3D RECONSTRUCTOR



Cube-3d is a Photogrammetric software for mapping and aerial image processing, dedicated to land surveying specialists. It will transform image data into highly accurate digital maps and 3D models with extreme precision. It imports Cube-a surveys and is fully compatible with registered Stonex scans and with any third-party 3D models.

# XH120 TECHNICAL FEATURES

## PERFORMANCE

Max Range	120 m
Scan speed	655.360 points/s
Ranging accuracy	Up to 1cm
Vertical resolution	32 channels
Field of view	360°x360°
N° of returns	1 (strongest)
Rotation rate	20 Hz
Angular Sampling Accuracy	Vertical: $\pm 0.01^\circ$ Horizontal: $\pm 0.01^\circ$
Safety	Class 1 (eyesafe) laser

## SYSTEM

Memory	500GB (expandable)
--------	--------------------

## ELECTRICAL SPECIFICATION

Power Supply	DC 18-36V/40W
Operating time	2 batteries, 4h each

## PHYSICAL SPECIFICATION

Scanner weight	2 kg
Processing unit weight	1.7 kg
Operating temperature	0° C to +50° C (32° F to 122° F)
Waterproof/Dustproof	IP54
Material	Aircraft grade aluminium

Suggested control Tablet:  
SRT10W - 10" Windows Tablet



Illustrations, descriptions and technical specifications are not binding and may change

STONEX AUTHORIZED DEALER



**STONEX®**  
Part of **UniStrong**

Viale dell'Industria 53 - 20037 Paderno Dugnano (MI) - Italy  
Phone +39 02 78619201  
[www.stonex.it](http://www.stonex.it) | [info@stonex.it](mailto:info@stonex.it)